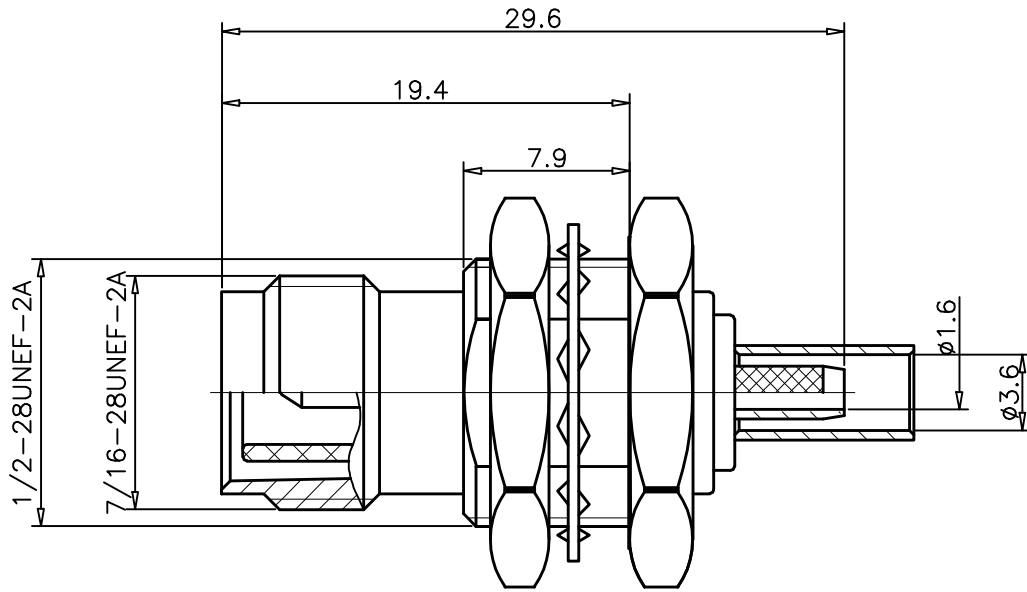


1	2	3	4
RevNo	Revision note	Date	Signature
00	Sketch Only	6/25/14	Teresa
			Checked
			Simon



Interface Per: MIL-C-39012, IEC 60169-17

Material & Finishing:

1. Center conductor: Brass, Gold Plating
2. Insulators: PTFE
3. Body & Other Material: Brass, Nickel Plating
4. Crimp Ferrule: Brass, Nickel Plating
5. Spring Washer: Brozen, Nickel Plating

RoHS Compliant.

ALL DIMENSIONS ARE IN MILLIMETERS AND [INCHES]

KERUI ELECTRONIC CO;LTD

Title

RPTNC male crimp for RG316D calbe

THESE DRAWING & SPEC. ARE THE PROPERTY OF KERUI ELECTRONIC CO;LTD AND SHALL NOT BE REPRODUCED, OR COPIED OR USED AS THE BASIS FOR THE MANUFACTURE OR SALE OF APPARATUS OR DEVICES WITHOUT THEIR EXPRESS WRITTEN CONSENT.

UNLESS OTHERWISE NOTED ALL SURFACES FINISHED TO 64/MAX.
ALL TOLERANCES ARE:
DECIMALS FRACTIONS ANGLES
x ± 1.0 ±1/64 x' ± 1'
x.x ± 0.5 x'x' ± 0.5
x.xx ± 0.1

Drawn by
Teresa

Ckd by
Simon

Appd by
Richard

Date
6/25/2014

Scale
3:1

Sheet 1 of 1

50 1110 116 01